

Potomac 10A+/AG+

MP BUILD (A03)

2008.08.05

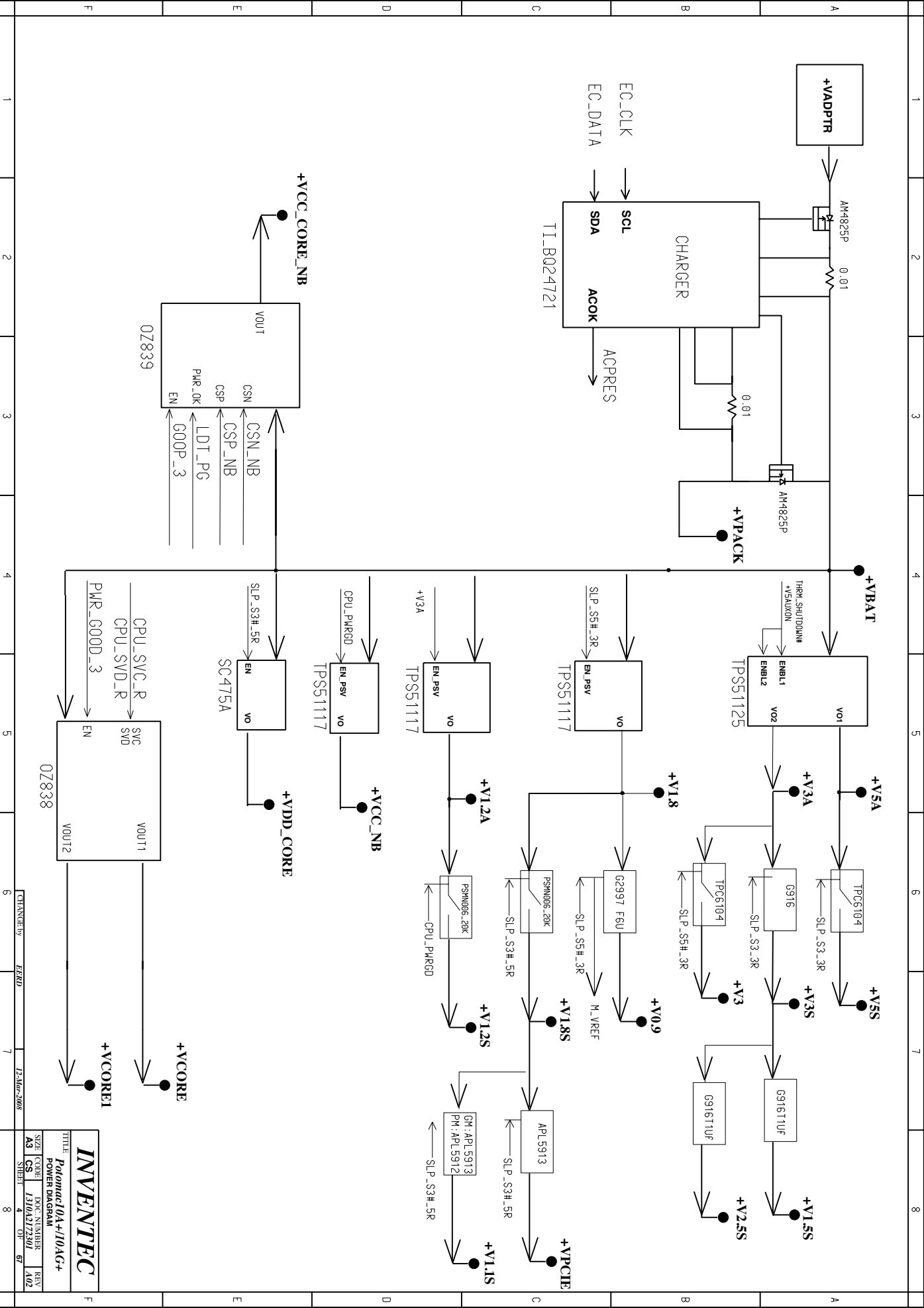
INVENTEC

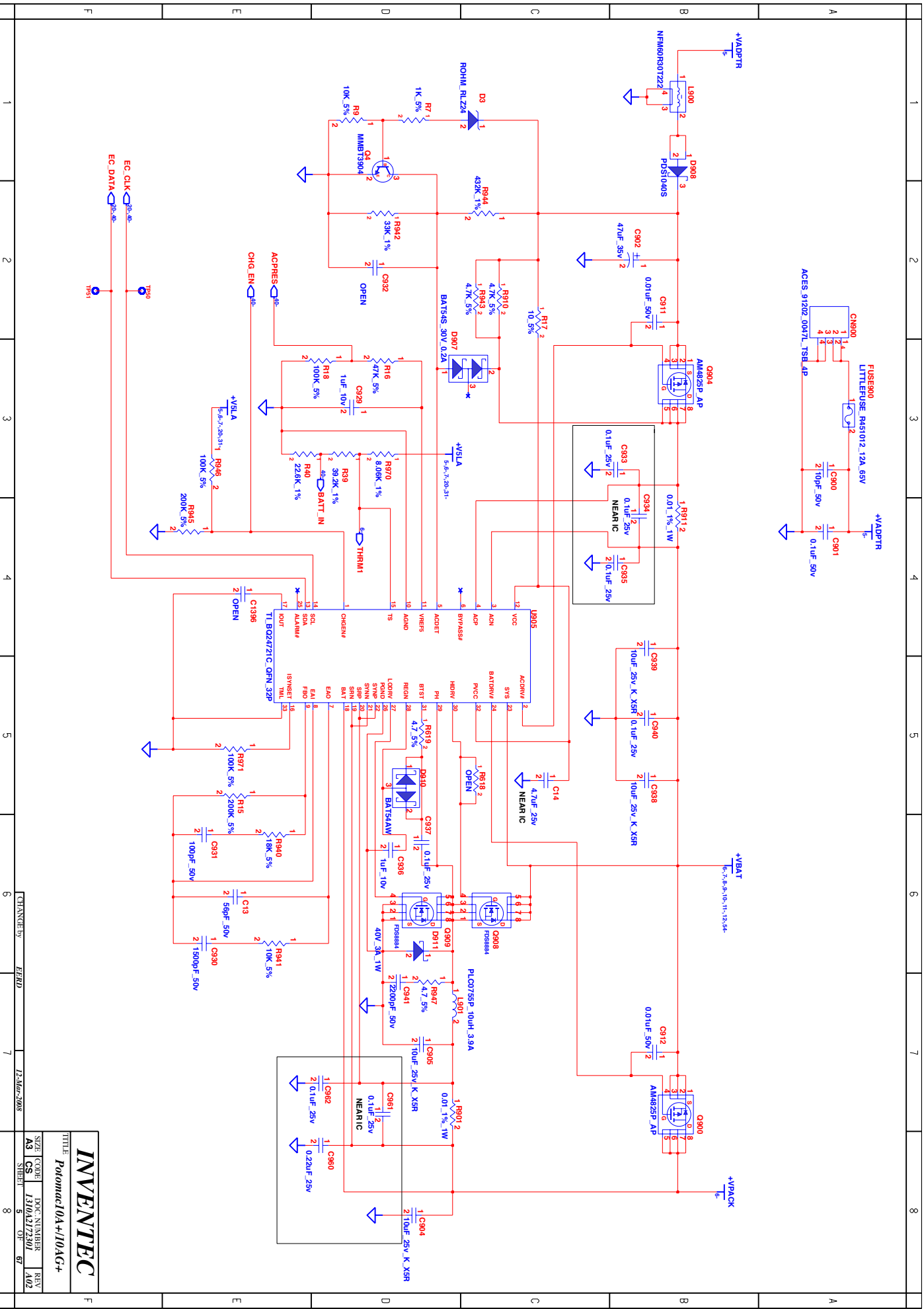
TITLE
Potomac10A+/10AG+

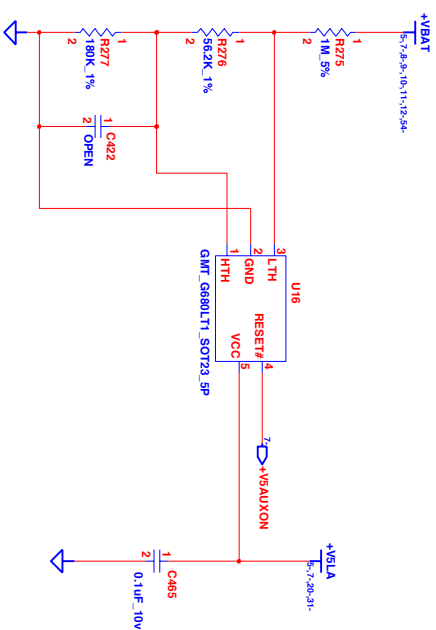
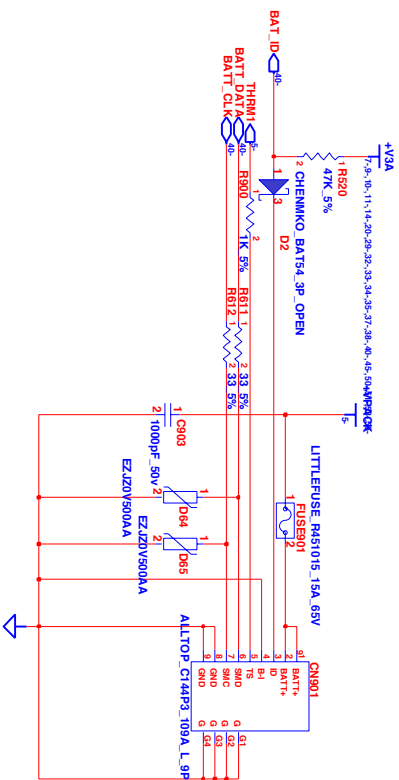
SIZE	CODE	DOC. NUMBER	REV
A3	CS	1310A17201	A02
SHEET		1	OF 61

CHANGED BY HEAD 4 AUG 2008

	1	2	3	4	5	6	7	8	
A	<div>TABLE OF CONTENTS</div>								A
B	<div>PAGE</div>								B
C	<div>PAGE</div>								C
D	<div>PAGE</div>								D
E	<div>PAGE</div>								E
F	<div>PAGE</div>								F
	1	2	3	4	5	6	7	8	
						CHANGED BY	HEAD	12-Mar-2008	
<div><div><div><div><div>TITLE</div><div>Potomac10A+/10AG+</div></div><div><div>INDEX</div><div>SIZE CODE</div><div>AS</div></div><div><div>DOC NUMBER</div><div>1310A172501</div></div><div><div>REV</div><div>A02</div></div></div><div><div>SHR</div><div>2</div></div><div><div>OP</div><div>67</div></div></div></div>									



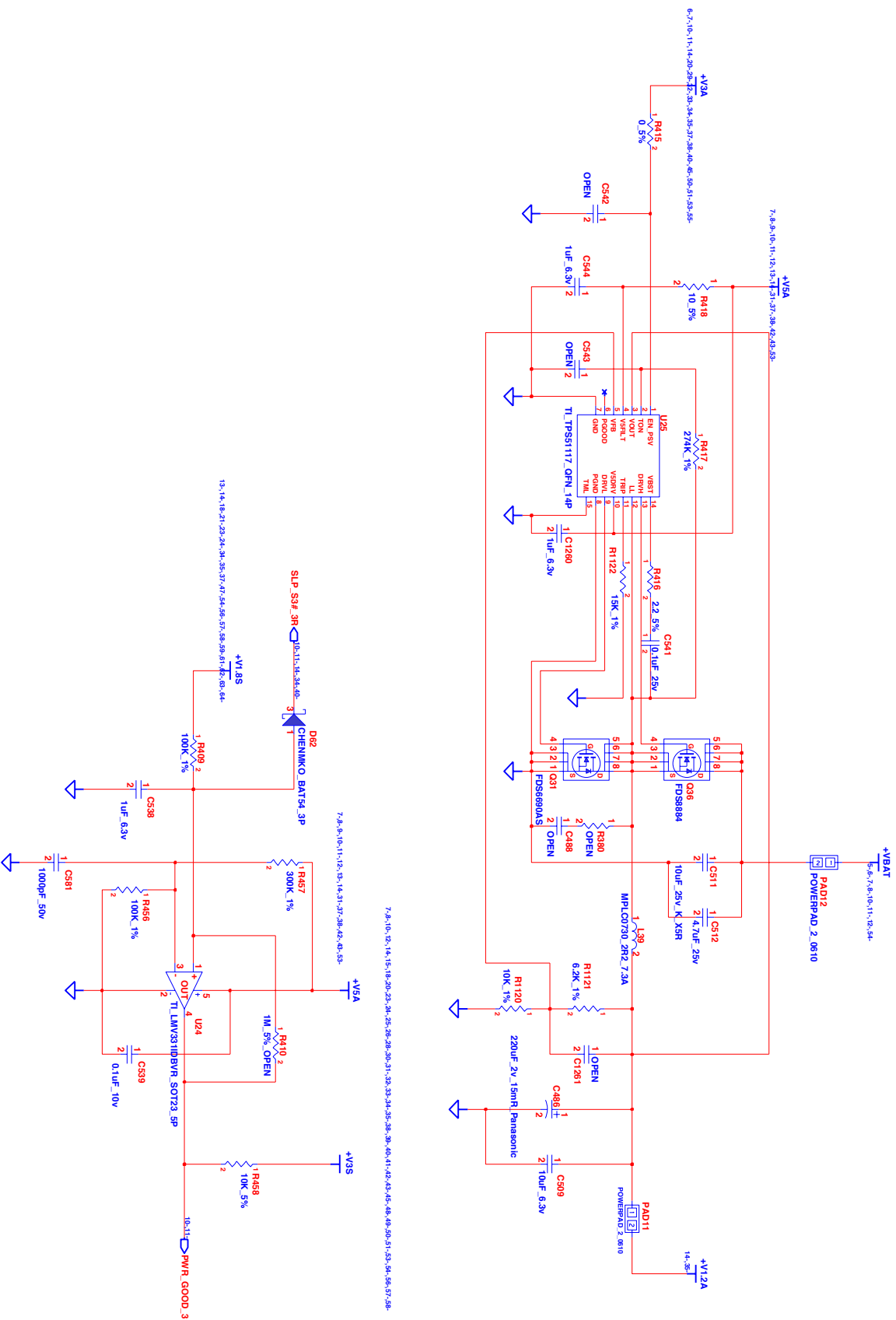




INVENTEC
Potomac10A+10AG+

SIZE CODE DOC NUMBER REV
A3 CS 1310A172501 402
SHEET 6 OF 67

CHANGE BY HEAD 12-Mar-2008

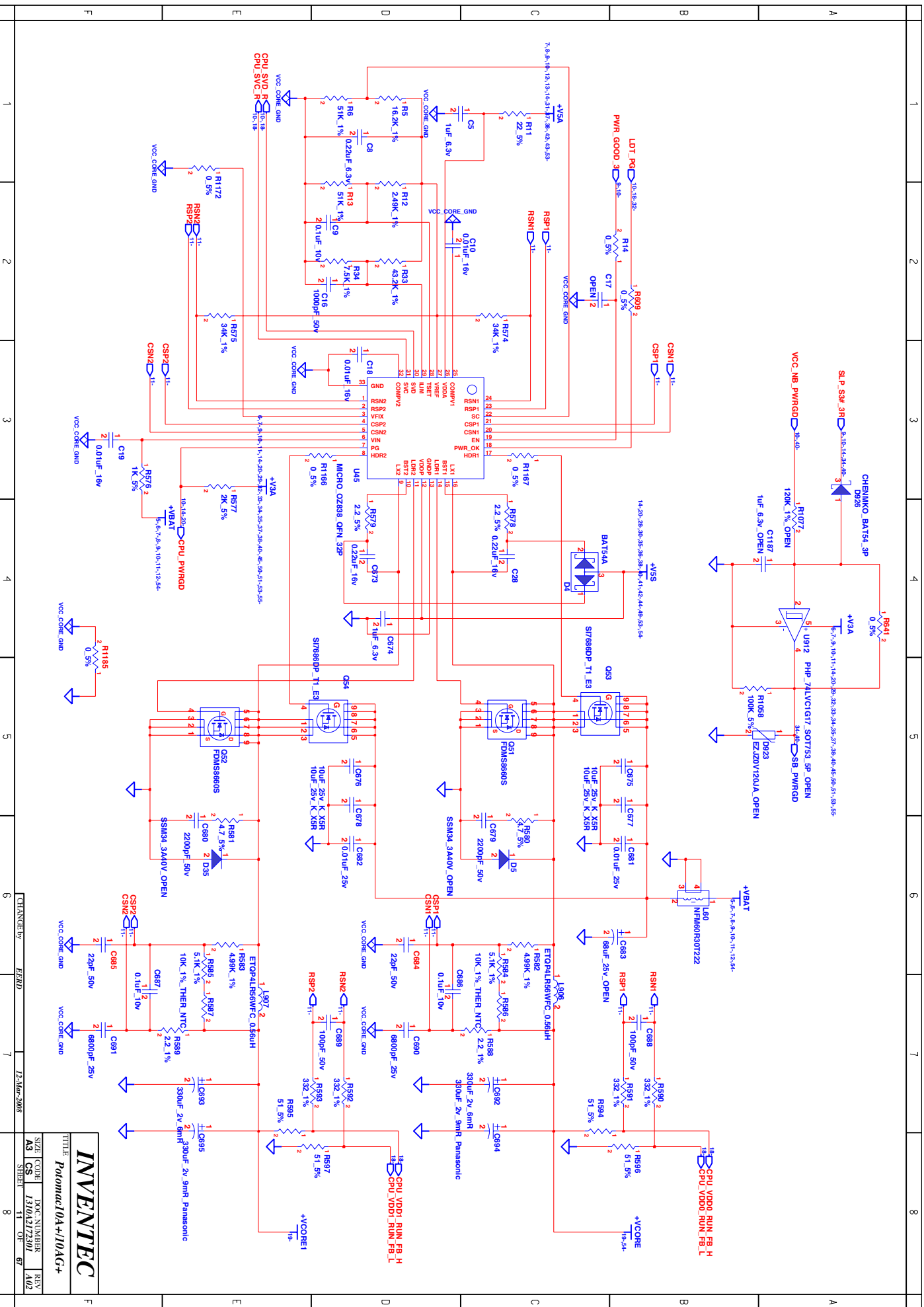


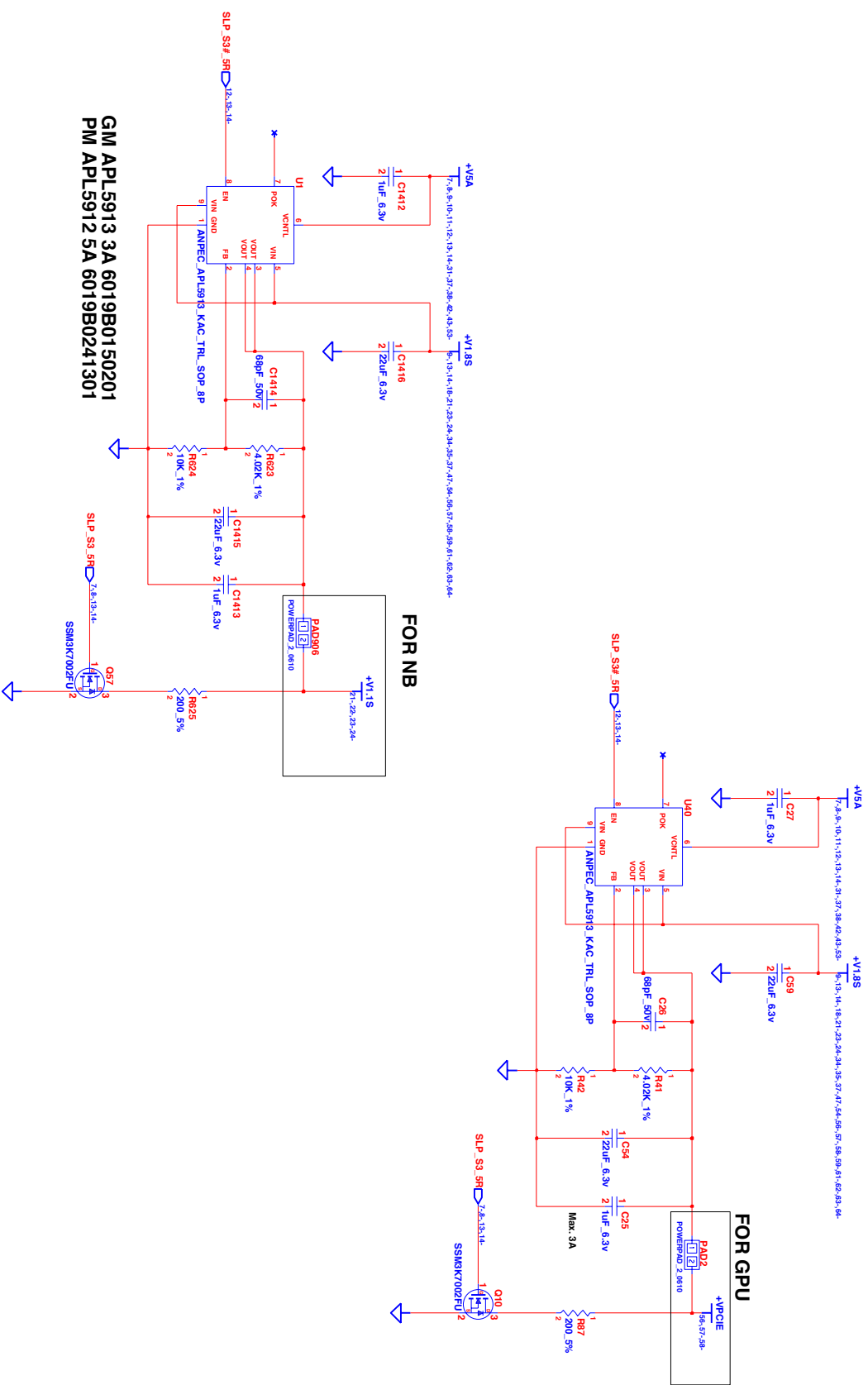
INVENTEC
Potomac10A+/10AG+

SIZE CODE DOC NUMBER REV
A3 CS 1310A172501 402

CHANGED BY HEAD 12-May-2008

8 07 67

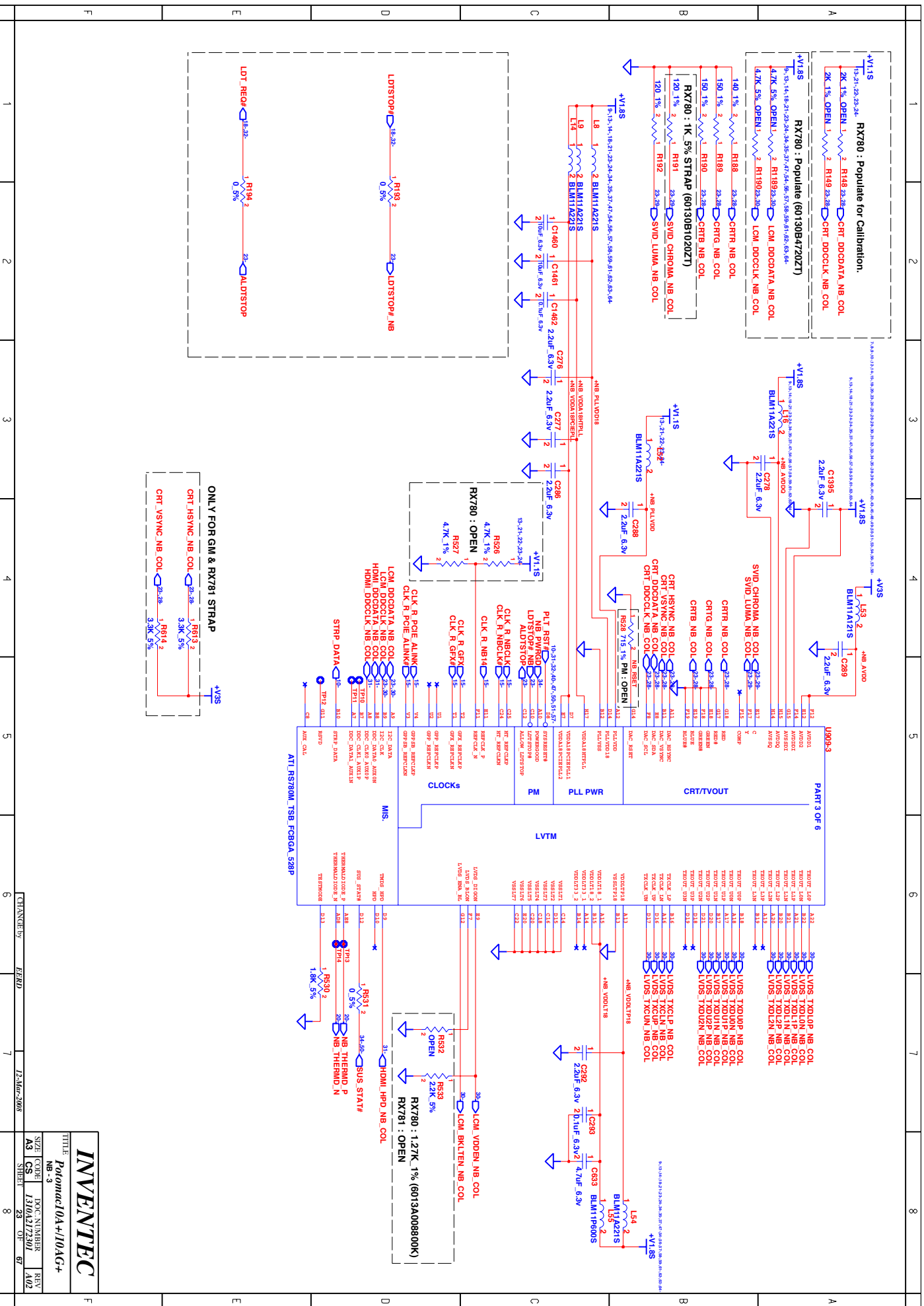


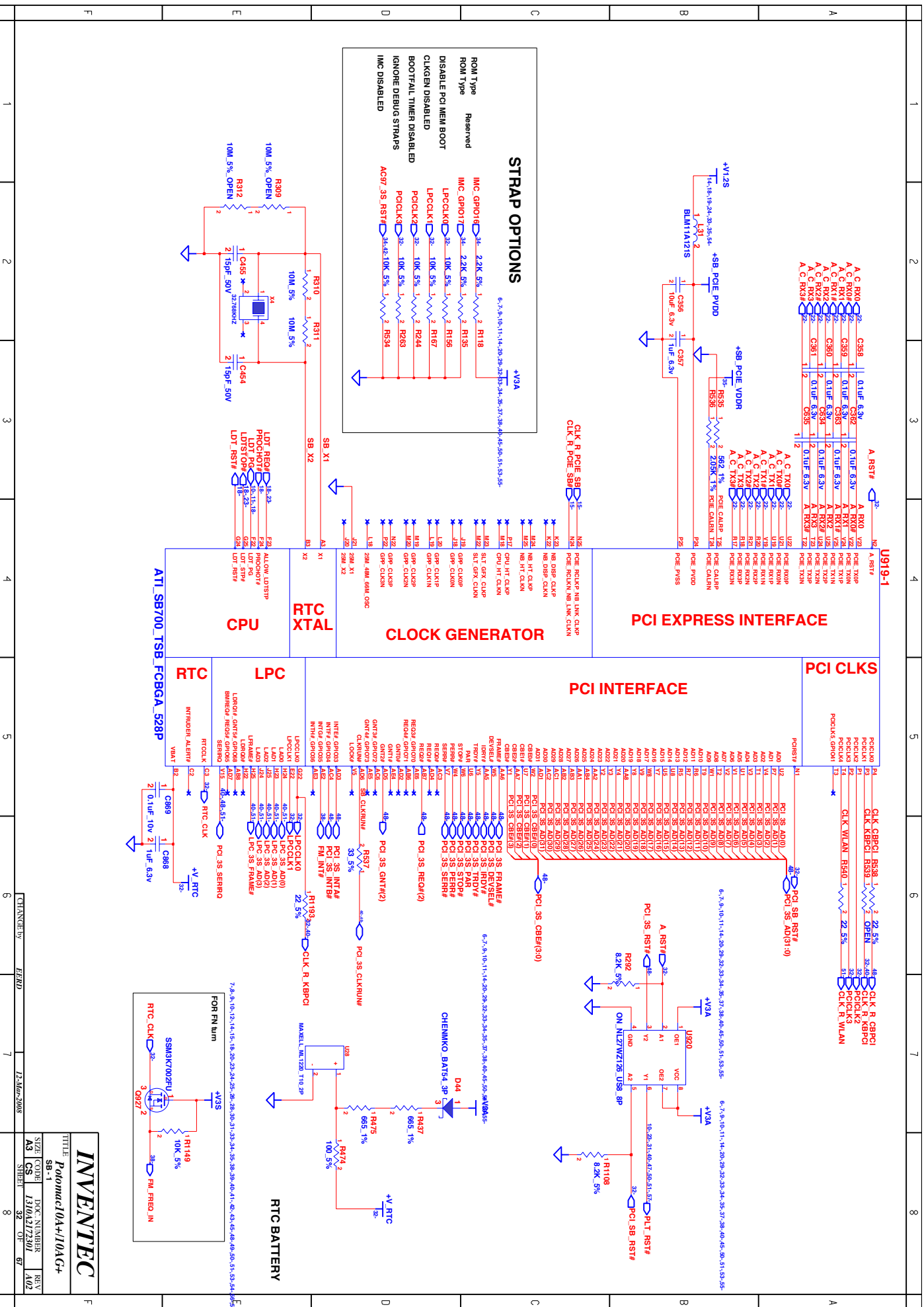


GM APL5913 3A 6019B0150201
PM APL5912 5A 6019B0241301

INVENTEC			
Potomac 10A+10AG+			
VGA POWER - 2			
SIZE	CODE	DOC NUMBER	REV
A3	CS	1310A217201	A02
SHEET		13	OF 67

CHANGED BY HEAD 12-MAR-2008





INVENTEC

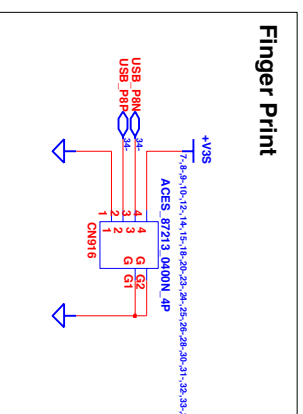
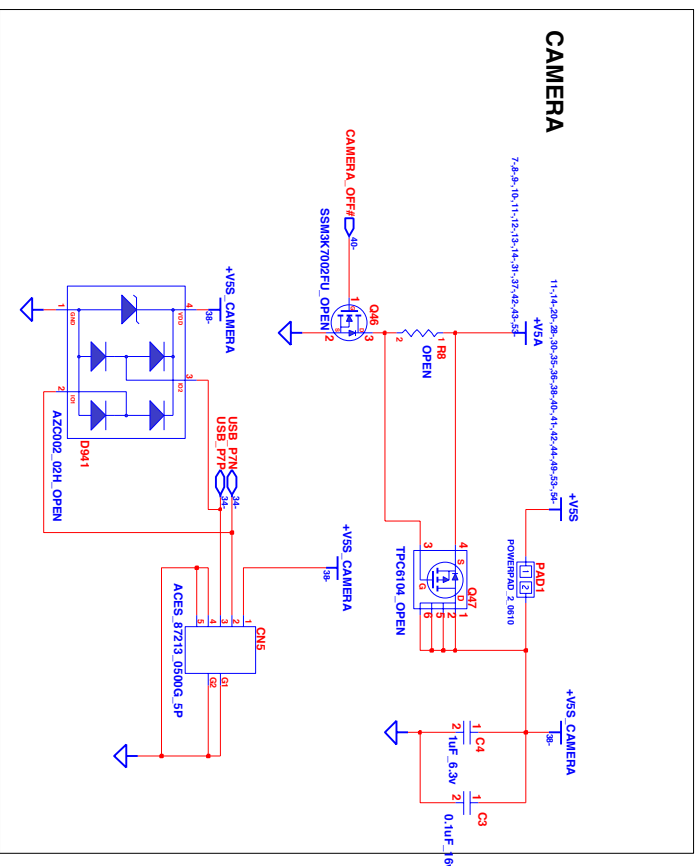
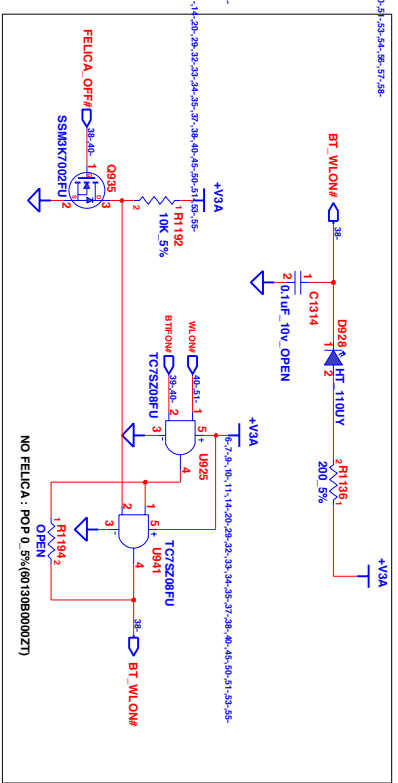
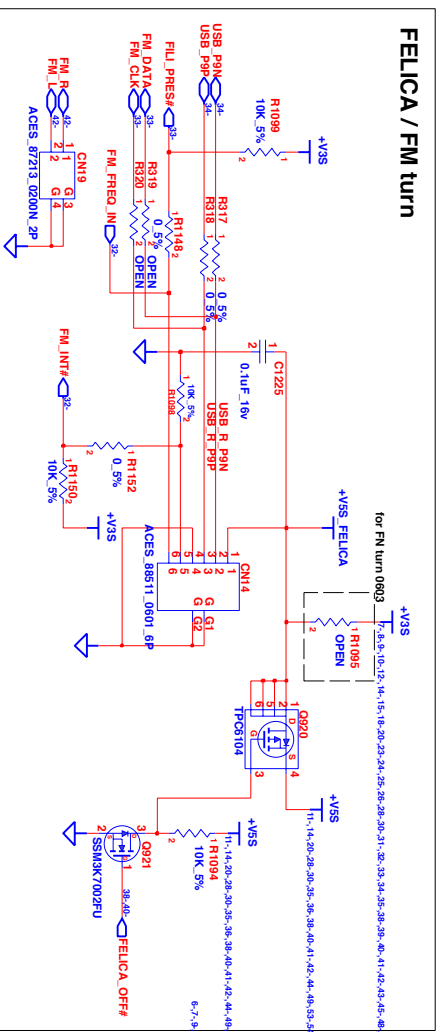
Potomac10A+10AG+

SB-1

SIZE CODE 1310A172501

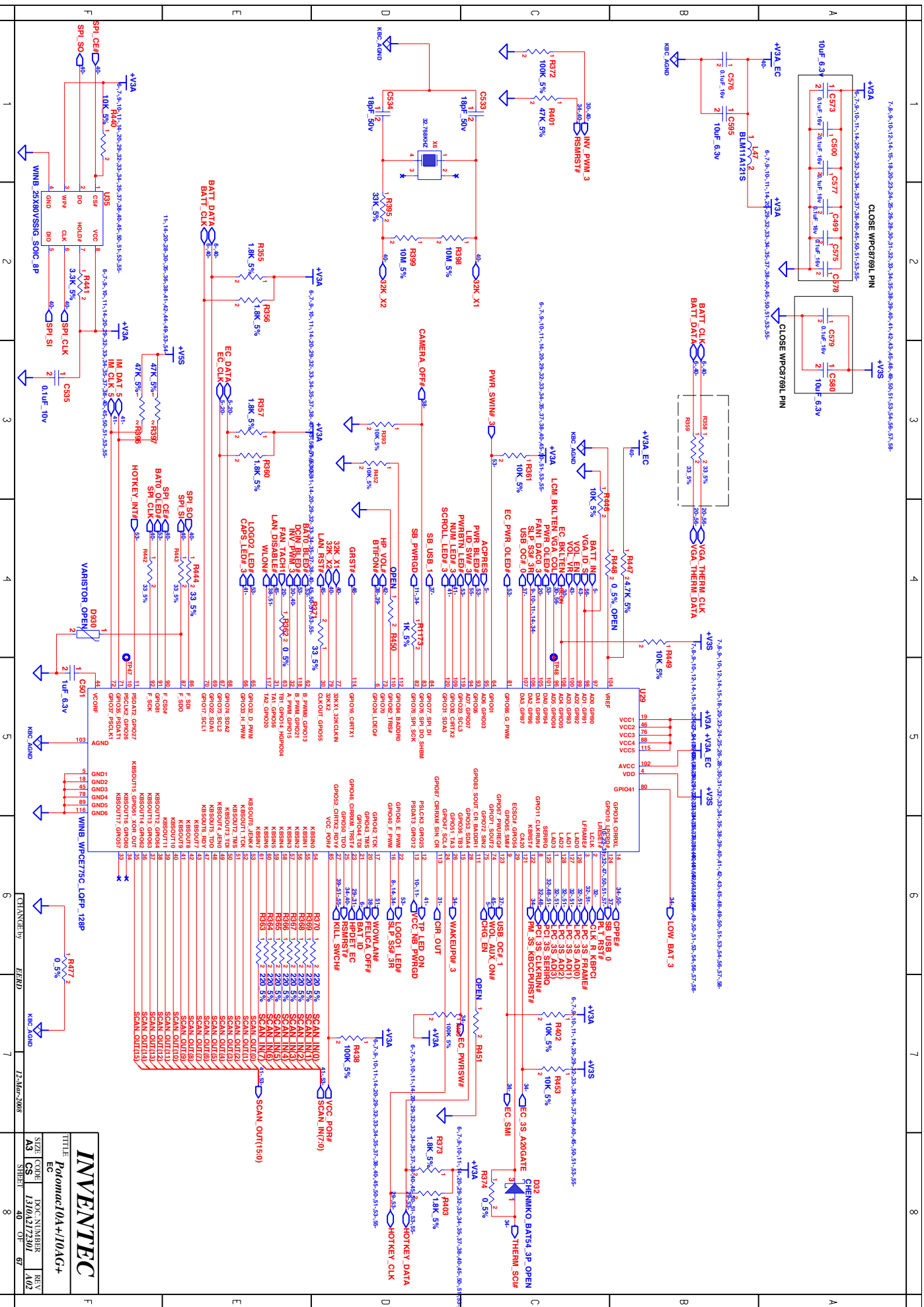
DOC NUMBER 32-07-67

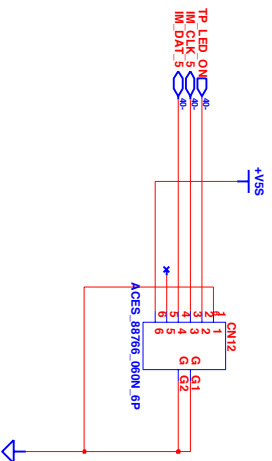
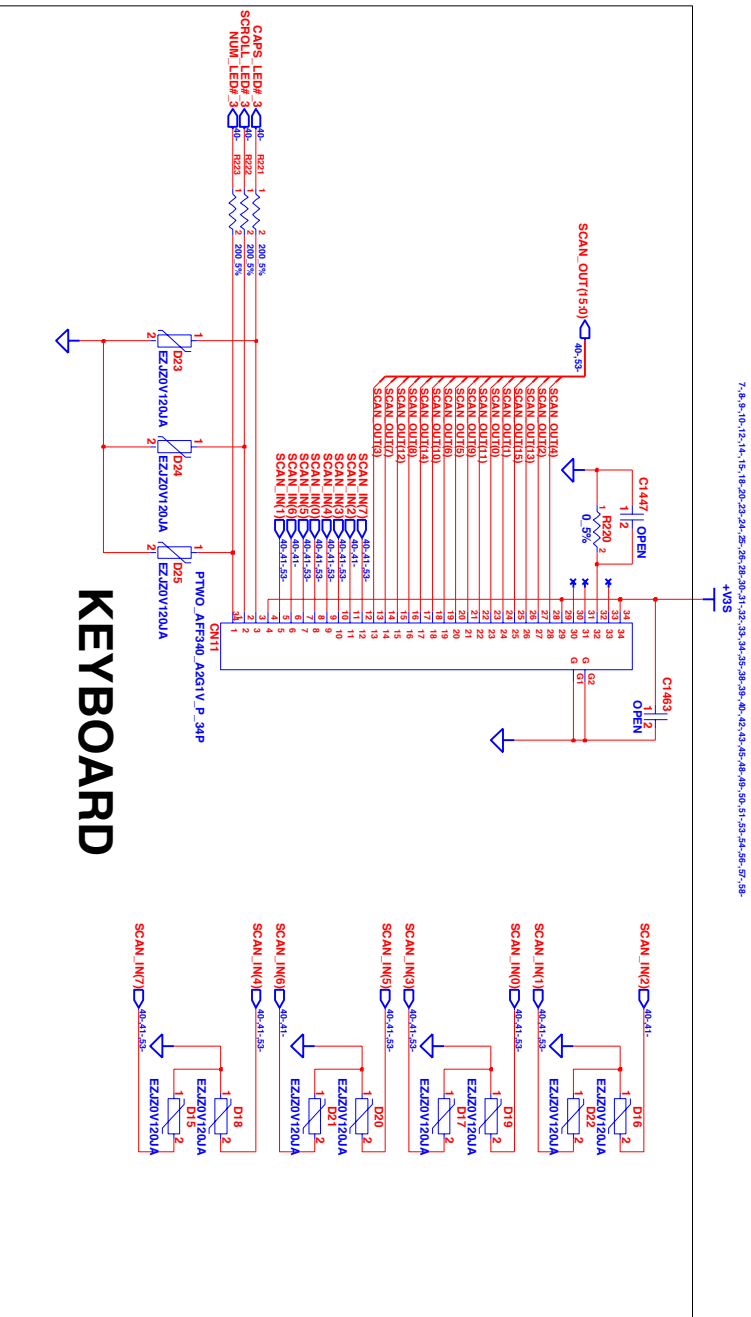
REV A02

CHANGE by *FERD*

FEED

<i>INVENTEC</i>			
TITLE <i>Potomac10A+/10AG+ FP & FILICA & CAMERA & FM</i>			
SIZE	CODE	DOC. NUMBER	REV
A3	CS	1310A2172301	A02
SHEET 38 OF 67			





INVENTEC

Patomac10A+10AG+

KEYBOARD

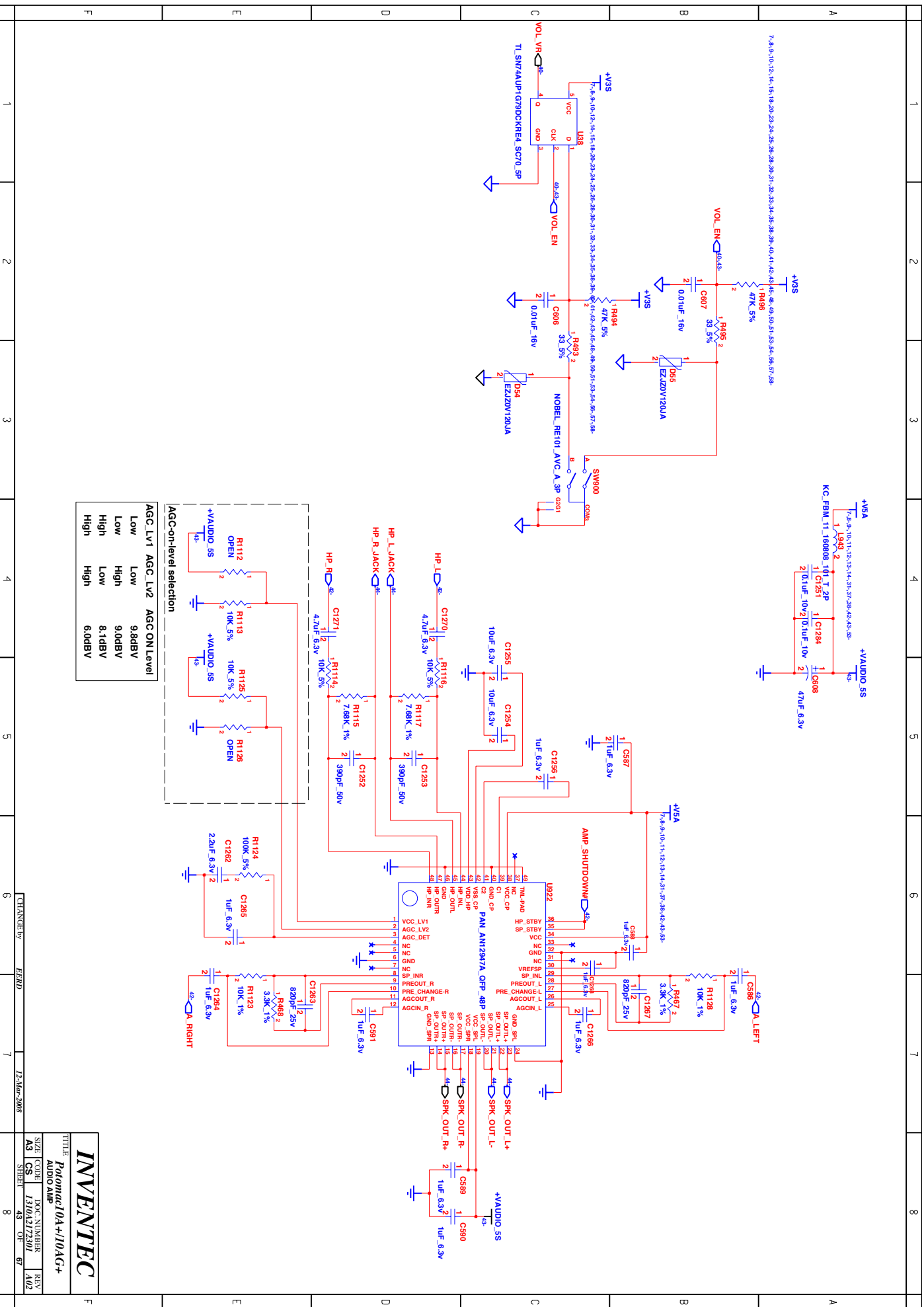
SIZE CODE DOC NUMBER REV
A3 CS 1310A217201 A02

CHANGED BY HEAD

7

12-MAR-2008

8



INVENTEC

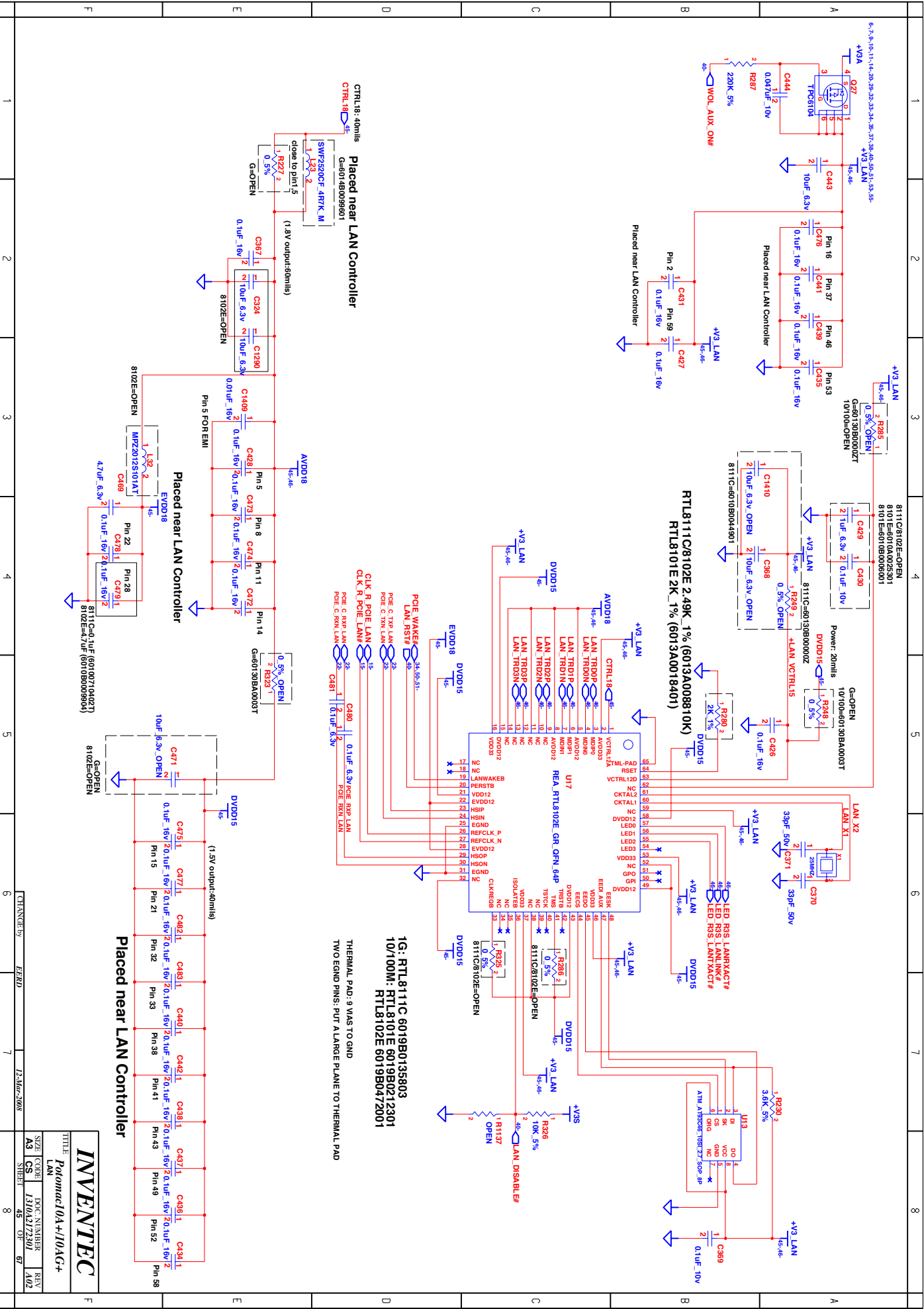
Patomac 10A+10AG+

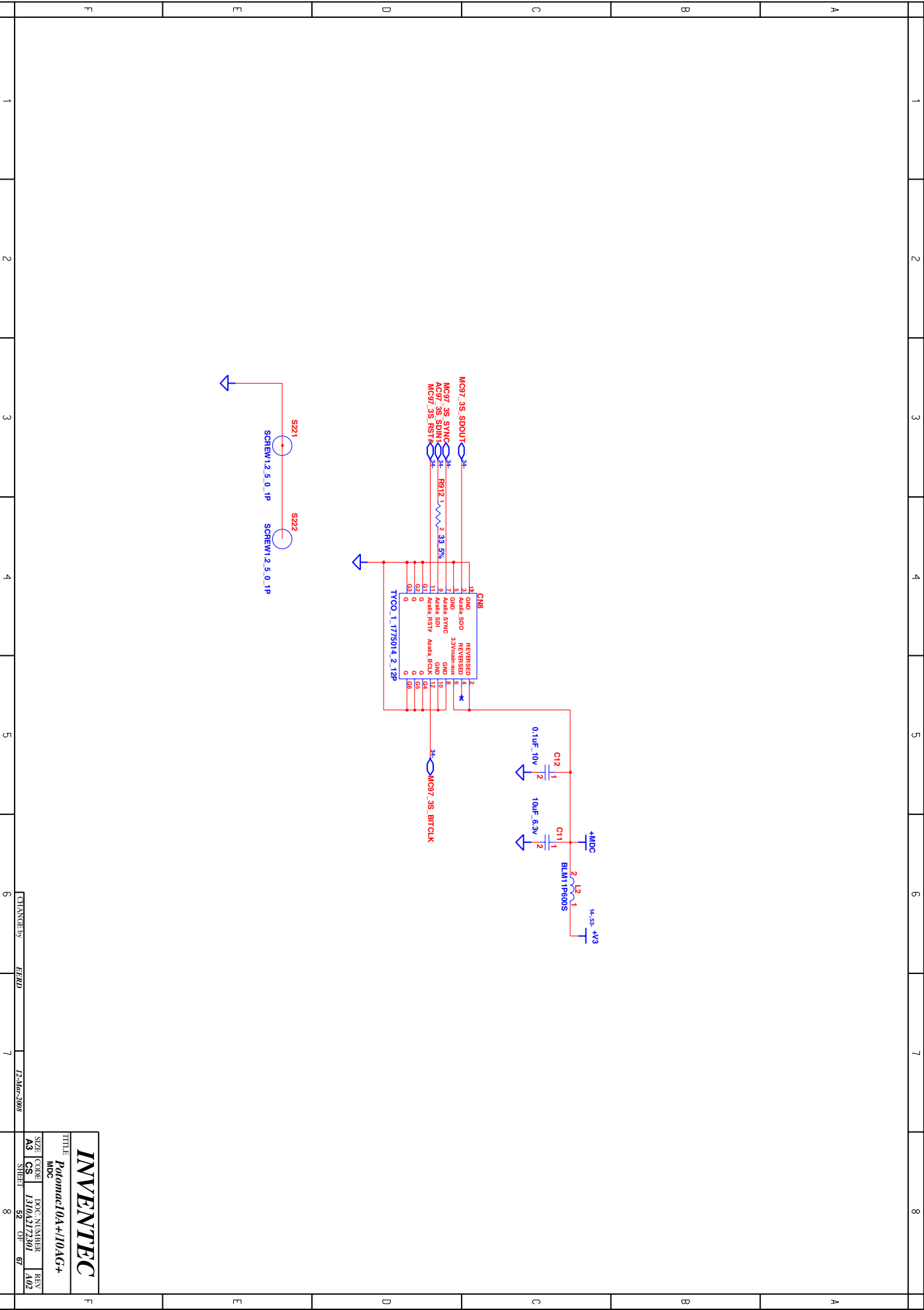
AUDIO AMP

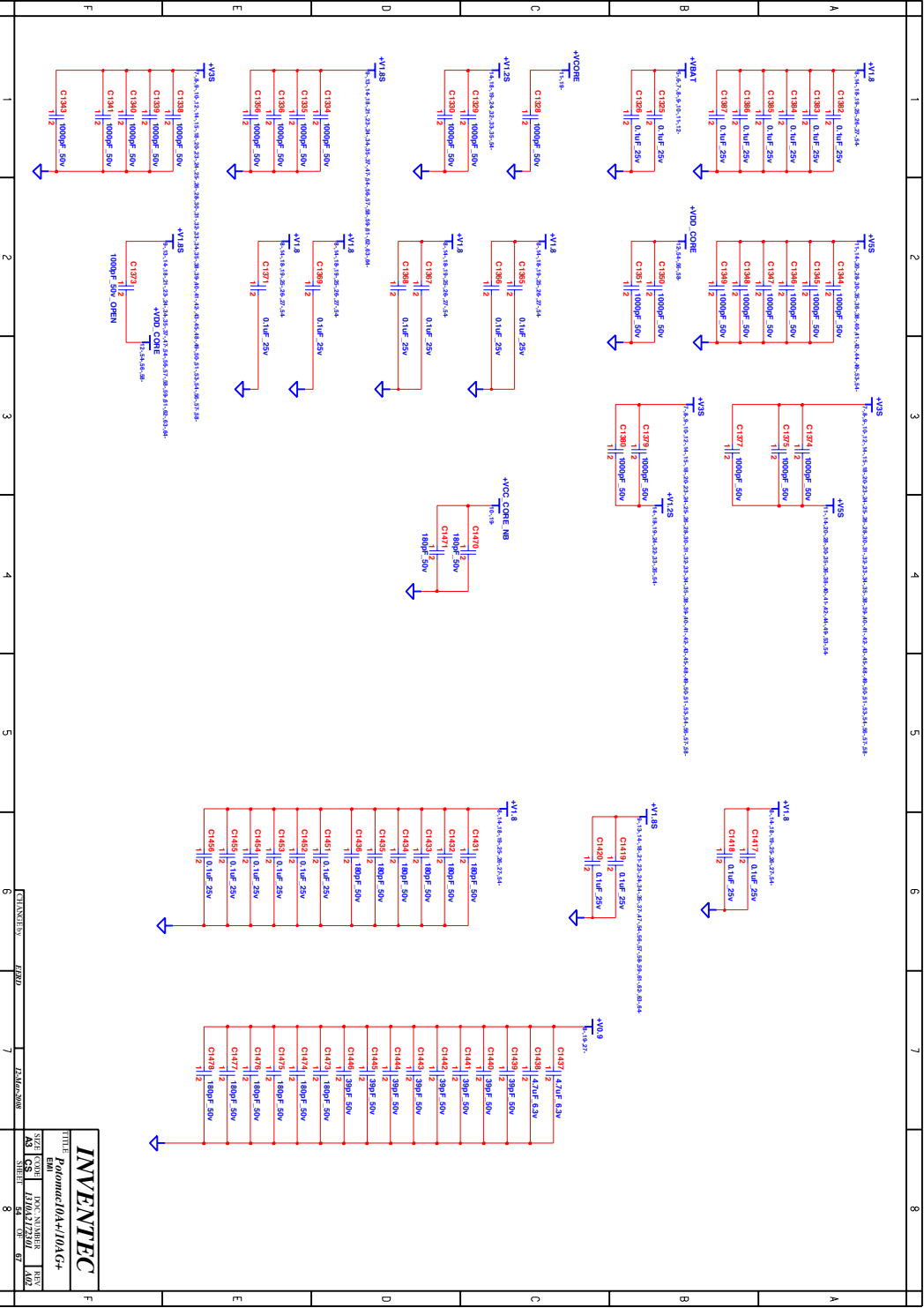
SIZE CODE DOC NUMBER REV

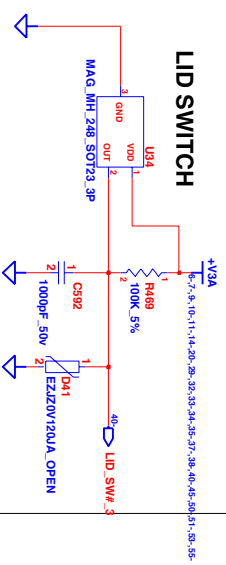
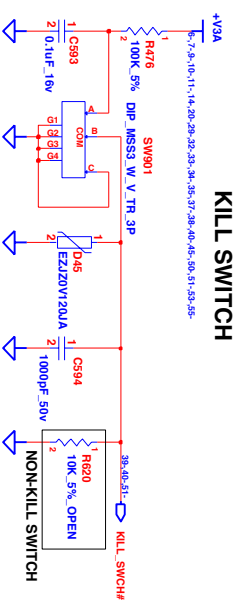
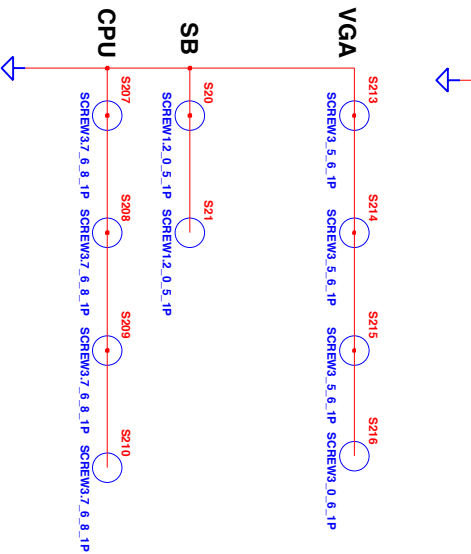
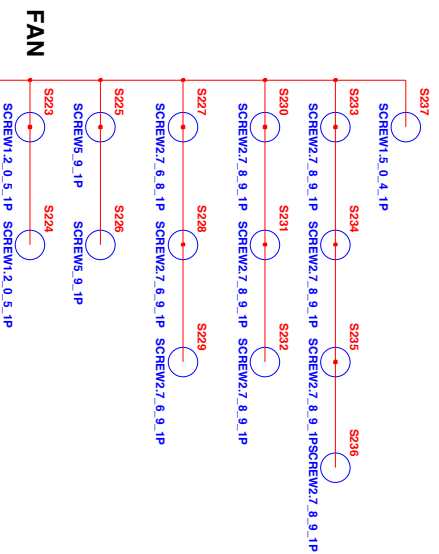
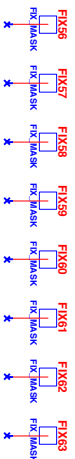
A3 CS 1310A217201 67

SHEET 43 OF 67

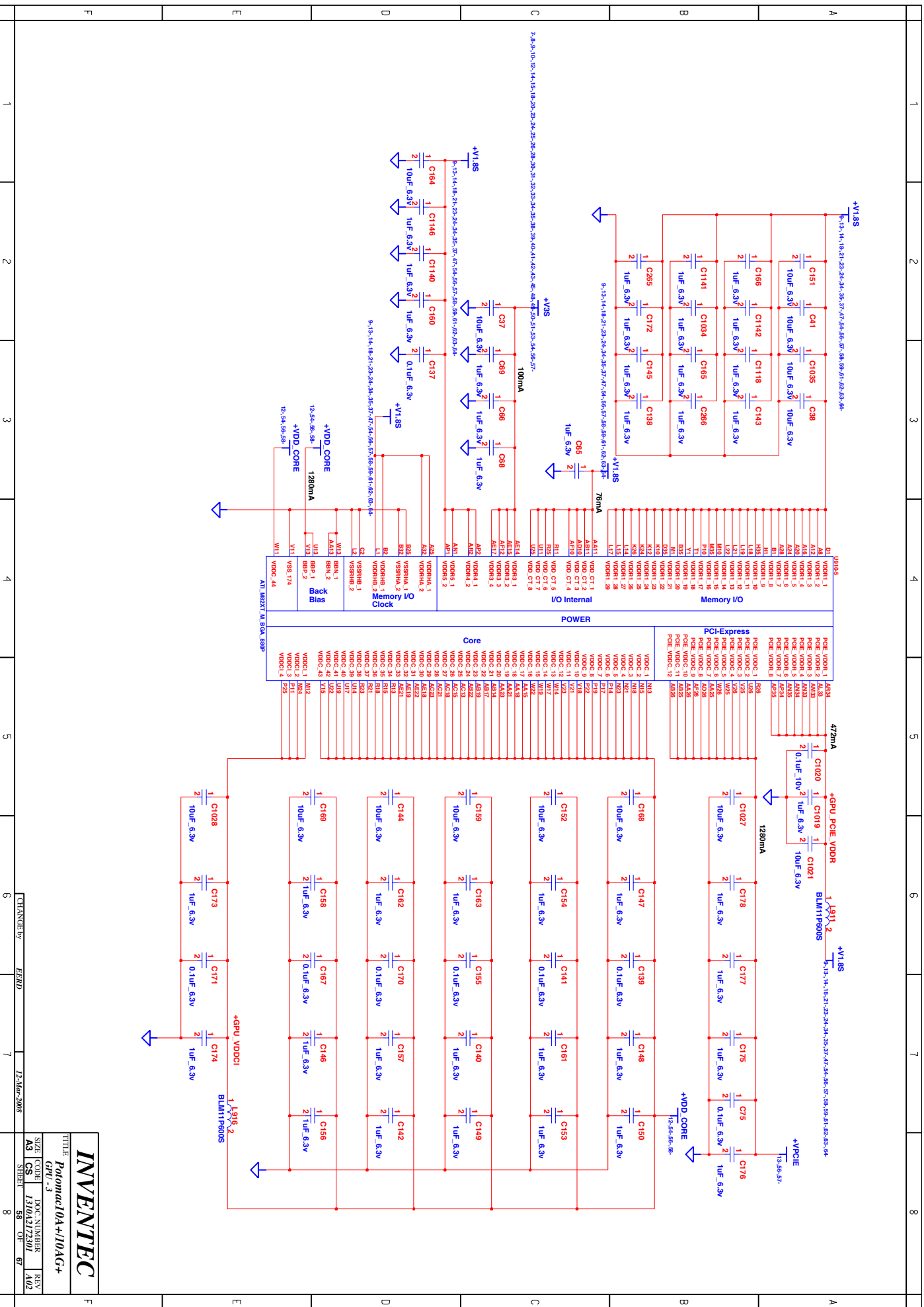








<i>INVENTEC</i>					
TITLE <i>Potomac 10A+10AG+</i> KILL & FLID SWITCH & SCREW					
SHEET NO.	DATE	DRAWN BY	CHECKED BY	APPROVED BY	REVISION
SA	12-02-2008	WYNNER	KRYG		A02
SHEET	59	OF	67		
CHANGE BY			FIELD	12-MAR-2008	7
					8

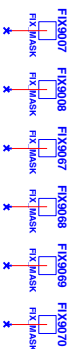


INVENTEC
Potomac10A+10AG+
CPU - 3
SIZE CODE 1310A172501
DOC NUMBER 67
REV A02

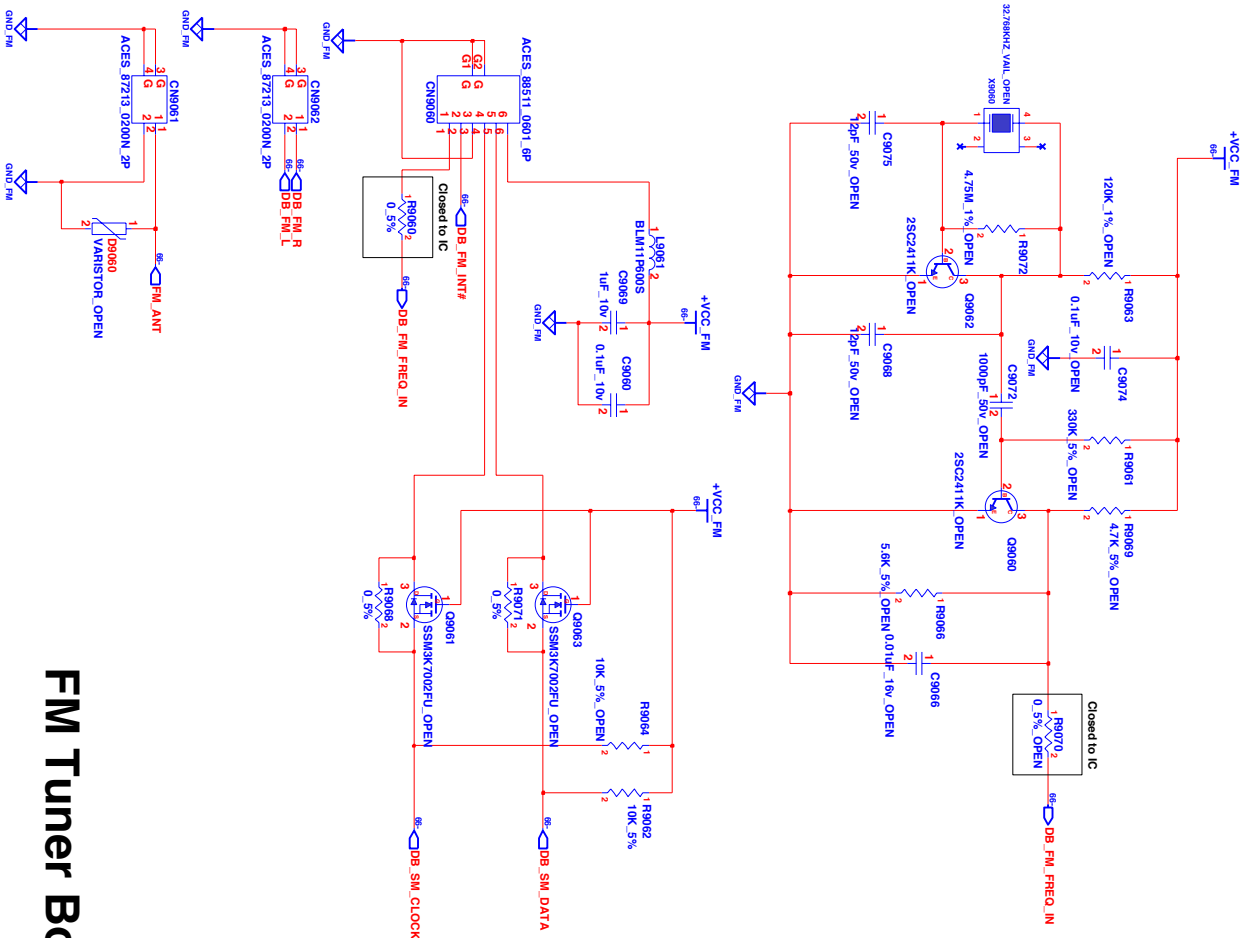
PIN1 + V3S
PIN2 D-
PIN3 D+
PIN4 G

PAD9031 1
2
3
4

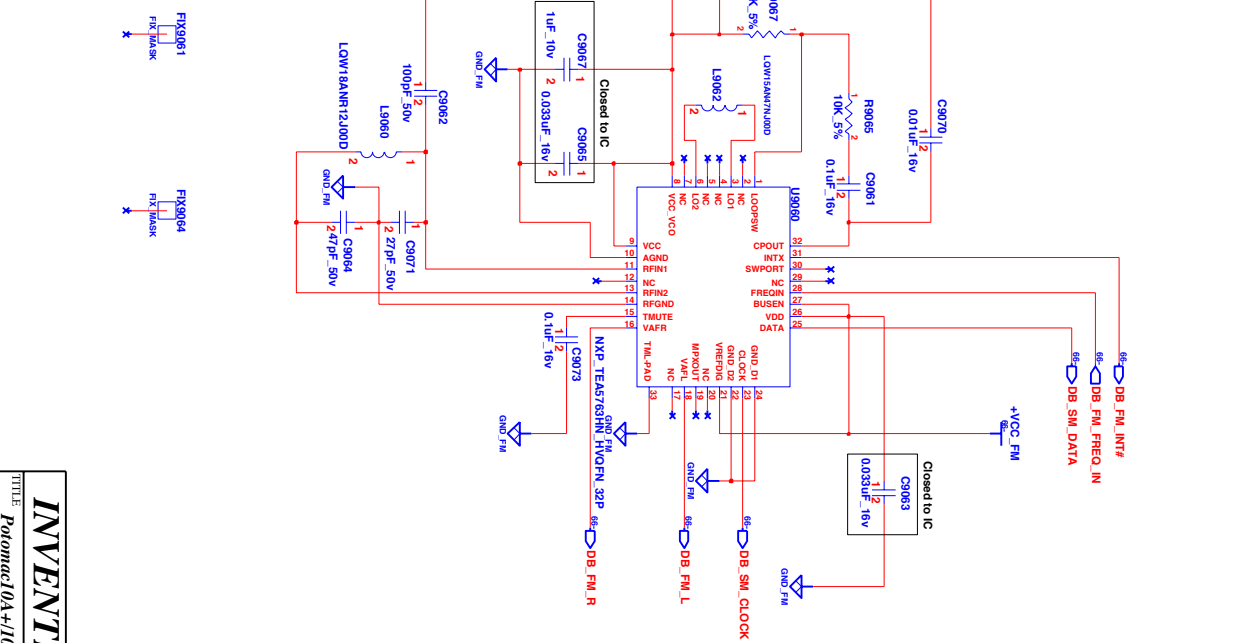
SMDPAD_4P_59



www.vinafix.vn



FM Tuner Board



INVENTEC

Potomac 10A+10AG+

Small Board

SIZE CODE 1310A2172001

REV 402

CHANGED BY HEAD 12-May-2008

66

07

67



POWER BOARD